

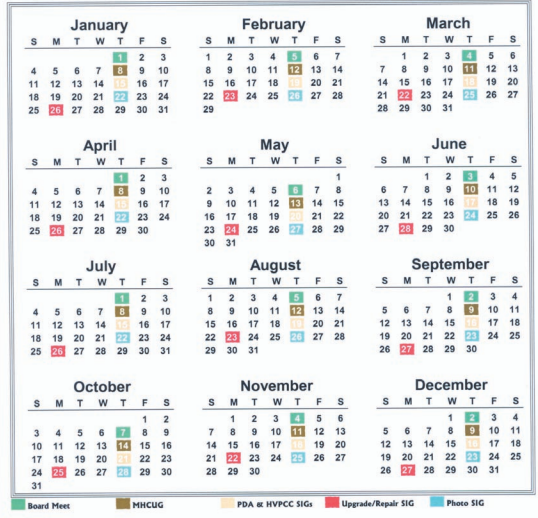
# Personalized Single Page Calendars

## Mid-Hudson Computer User Group, Inc.

Jan 8 Web Design  
 Feb 12 Information Security  
 Mar 11 Identity Theft  
 Apr 8 TrendMicro (Virus Protection)  
 May 13 SnapVideo  
 Jun 10 Broadband Phone Service

<http://www.mhcug.org>

2004



## A Typical May Calendar

\* Lock in the plane ticket prices  
 \* and also the Hotel ...  
 \* Check Desktop price about the 15th  
 Start saving for Year-End taxes  
<http://www.mhcug.org>

Time to plan the Garden

May 2003



OR

Sun	Mon	Tue	Wed	Thu	Fri	Sat
				Don is 72 1	2	3
Barb is 60 4	Cinco de Mayo 5	6	7	Haircut 9AM MHCUG Meeting 8	9	Shirley is 56 10
11	12	13	Sierra is 6 14	HVPC Meeting 15	16	17
18	19	20	21	22	23	24
25	26	27	28	29	30	31

## Yearly Calendar

This program (calendarY.exe) will print a Single Page Yearly calendar with your header info and look like the figure above. Data used to print can come from two sources, the User interface or from a Control text file. The control file gives you more flexibility. You can enter a set of repeating activities for the whole year, that is, events which occur at the same time each month, like the 2nd Thursday or on some periodic time frame like every 4 weeks.

The relationship of the User interface entry boxes to the calendar are shown in the diagram on page 2.

## Monthly Calendar

This program (calendarM.exe) will print a Single Page Monthly calendar with your header info and look like the figure above. Data used to print can come from two sources, the User interface or from a Control text file.

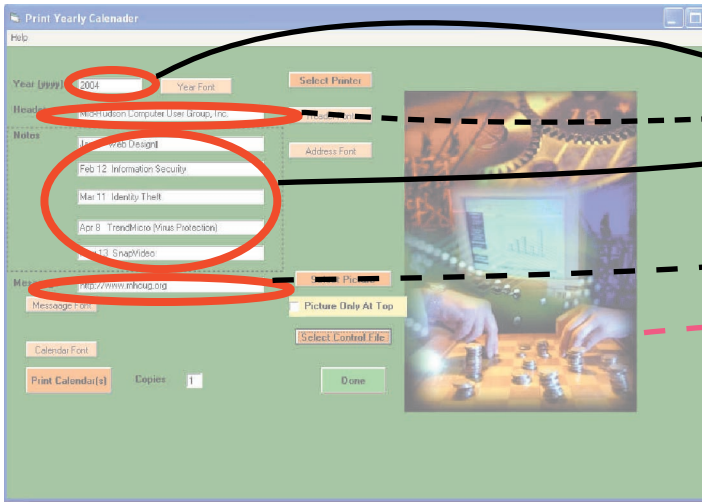
The Control file gives you more flexibility. You can enter a set of repeating activities for particular months, that is events can occur only on this month, like birthdays, anniversaries, or notice of events that occur on a particular month like School Taxes.

It is advisable to generate 12 control files for the different months as a place to hold known events. Start with a template month with all your monthly meetings and make 12 copies.

The relationship of the User interface entry boxes to the calendar are shown in the diagram on page 4.

# Yearly Calendar

## Relationship of User Interface to Calendar

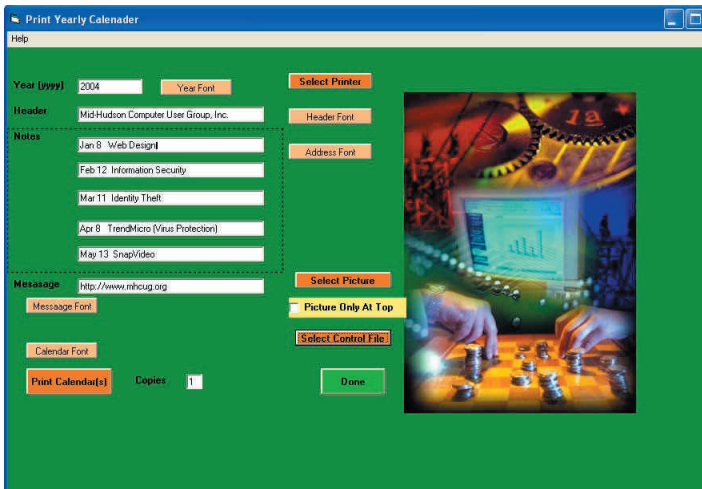


### Mid-Hudson Computer User Group, Inc.

Jan 8 Web Design  
Feb 12 Information Security  
Mar 11 Identity Theft  
Apr 8 TrendMicro (Virus Protection)  
May 13 SnapVideo  
Jun 10 Broadband Phone Service

<http://www.mhcg.org>

2004



To generate a calendar, simply filling in the interface boxes for the items that you want printed. The Header is the main title. Notes are for for things like address, phone numbers, URL's, or meeting notices. The only item pre-filled in is the Year. Select a Printer then select Fonts for the various sections. The default fonts are *Arial* for all items except the Notes which is *Times Roman*. If you do select fonts it is best to do them in groups of those items which will use the same font.

Select a picture if desired.

Select the number of copies and print.

### Using The Control File

The Control file is a basic text file that can be generated with Notepad or Wordpad. Each line in that controls the building of the calendar starts with a 3 letter mnemonic. The case of the mnemonics is not important. All lines that start with something other than one of the mnemonics is considered a comment. After selecting the file it is possible to change the entries thru the User interface. A table of the Mnemonics and a sample file is shown on the next page.

# Yearly Calendar

Mnemonic	Description	Example
<b>YER</b>	The calendar year in the form of YYYY	yer 2004
<b>HDR</b>	Text to be placed as a Header at the top .	hdr Mid-Hudson Computer User Group
<b>MSG</b>	A Message to be placed just about the Year.	URL: <a href="http://www.mhcug.org">http://www.mhcug.org</a>
<b>NOT</b>	There are 6 lines available just below the Header for Notes.	NOT Jan 8 Web Design
<b>DTM</b>	Day This Month. The same day will be marked each month, like the 2nd Thursday. The text will be placed in a ledger at the bottom.	DTM 2 5 MHCUG Meeting
<b>EFW</b>	Every Few Weeks. The same day of the week will be marked at a defined period, like every 4 weeks from a start date.	efw 3/14/2004 4 Haircut
<b>PIC</b>	Picture path. A full path to location of a graphic to use at the top of the calendar.	pic c:\calendar\rose.gif

## Sample Control text file . . .

### Yearly Calendar Control File for MHCUG

```
YER 2004
hdr Mid-Hudson Computer User Group, Inc.
msg http://www.mhcug.org
not Jan 8 Web Design
not Feb 12 Information Security
not Mar 11 Identity Theft
not Apr 8 TrendMicro (Virus Protection)
not May 13 SnapVideo
not Jun 10 Broadband Phone Service
dtm 1 5 Board Meet
DTM 2 5 MHCUG
dtm 3 5 PDA & HVPCC SIGs
dtm 4 2 Upgrade/Repair SIG
dtm 4 5 Photo SIG
pic e:\VB98\Calendar\computer04.jpg
```

# Monthly Calendar

## Relationship of User Interface to Calendar



### A Typical May Calendar

- \* Lock in the plane ticket prices and also the Hotel . . .
- \* Check Desktop price about the 15th
- Start saving for Year/End taxes
- http://www.mhcug.org

Time to plan the Garden

May 2003



Sun	Mon	Tue	Wed	Thu	Fri	Sat
				Don is 72 1	2	3
Barb is 60 4	Cinco de Mayo 5	6	7	Haircut SAM MHCUG Meeting 8	9	Shirley is 66 10
11	12	13	Sierra is 6 14	HVPC Meeting 15	16	17
18	19	20	21	22	23	24
25	26	27	28	29	30	31

To generate a calendar, simply filling in the interface boxes for the items that you want printed. The Header is the main title. Notes are for for things like address, phone numbers, URL's, or meeting notices. The only item pre-filled in is the Year. Select a Printer then select Fonts for the various sections. The default fonts are *Arial* for all items except the Notes which is *Times Roman*. If you do select fonts it is best to do them in groups of those items which will use the same font. Select a picture if desired. Select the number of copies and print.

### Using The Control File

The Control file is a basic text file that can be generated with Notepad or Wordpad. Each line in that controls the building of the calendar starts with a 3 letter mnemonic. The case of the mnemonics is not important. All lines that start with something other than one of the mnemonics is considered a comment. After selecting the file it is possible to change the entries thru the User interface. A table of the Mnemonics and a sample file is shown on the next page.

# Monthly Calendar

Mnemonic	Description	Example
<b>YER</b>	The calendar year in the form of YYYY	yer 2004
<b>MON</b>	Number of the Month (1-12)	mon 5
<b>HDR</b>	Text to be placed as a Header at the top .	hdr A Typical May Calendar
<b>MSG</b>	A Message to be placed just about the Year.	msg Time to plan Garden
<b>NOT</b>	There are 6 lines available just below the Header for Notes.	NOT Lock in the plane ticket prices
<b>DTM</b>	Day This Month. The same day will be marked each month, like the 2nd Thursday. The text will be added to the other notes for the date..	DTM 2 5 MHCUG Meeting
<b>DAY</b>	A Day note. The day followed by the note. Use the '^' (uppercase 6) to start a new line.	day 8 Haircut 9AM
<b>BIR</b>	Birthday or Annivesary. Put in the Date Of Birth or Start Date followed by Who or What.	bir 5/10/1947 Shirley
<b>PIC</b>	Picture path. A full path to location of a graphic to use at the top of the calendar.	pic c:\calenda\rose.gif

## Sample Control text file . . .

What a Monthly Control would be like.  
 YER 2003  
 MON 5  
 hdr A Typical May Calendar  
 msg Time to plan the Garden  
 day 5 Cinco de Mayo  
 day 8 Haircut 9AM  
 not \* Lock in the plane ticket prices  
 not \*       and also the Hotel . . .  
 not \* Check Desktop price about the 15th  
 not Start saving for YearEnd taxes  
 not <http://www.mhcug.org>  
 bir 5/1/1931 Don  
 bir 5/4/1943 Barb  
 bir 5/10/1947 Shirley  
 bir 5/14/1997 Sierra  
 dtm 2 5 MHCUG Meeting  
 dtm 3 5 HVPCC Meeting  
 pic e:\VB98\calendar\vegas.wmf

## Personalized Single Page Calendars

**Notes:**

If you find problems using these programs or would like additional features added contact Don Peck at,

[dpeck@hvc.rr.com](mailto:dpeck@hvc.rr.com)